



matrix[®] **SYS-
TEM**
LINE **OVER-
VIEW**

#1 DIGITAL IMPLANT
COMPANY



matrix[®]

NO
ABUTMENT.
NO
CEMENT.
NO
LIMITS.

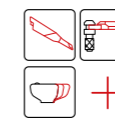
THE WORLD'S FIRST **DIGITAL IMPLANT**

The **matrix**[®] is the first-ever dental implant connection that has been specifically designed for the new digital manufacturing technologies such as CAD/CAM milling or 3D printing. The implant concept allows to plan the restoration directly on the implant without the use of the abutment and without manual cementation.

10 digital **matrix**[®] applications allow an immediate access to fast, precise and profitable clinical workflows - eliminating the need for an abutment.



8 unique
patents



10 integrated apps for
the digital workflow



CE & FDA
Registered






Red Dot Awards
winner

BENEFITS FOR THE DIGITAL WORKFLOW WITH **matrix**[®]

REDEFINING
IMPLANTOLOGY:
**IMMEDIATE.
SIMPLE.
PERSONALIZED.**



THE FASTEST DIGITAL WORKFLOW YET




-  Immediate full digital local workflow (chairside) within 1 hour
-  Reducing number of visits in the clinic for the patient dramatically
-  TRI+ connection to all open digital workflows for chairside & labside

SIMPLICITY

Cost

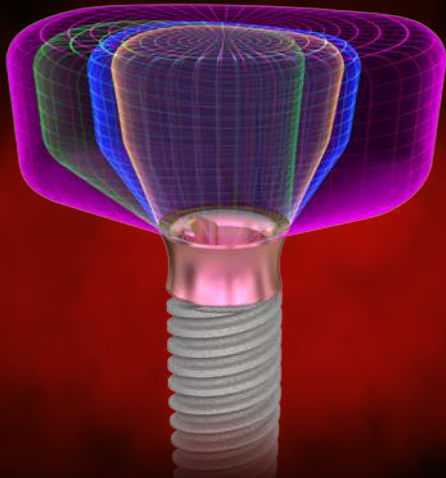


FREEDOM IN MATERIALS, INDICATIONS & COST




-  Faster Workflow and increased precision by 73% due to no abutment, no cement, no model and no analog
-  No limits in materials, indications and angulations
-  Significant material and cost savings

PERSONALIZED

Biology



DESIGNED FOR LONG-TERM SUCCESS

-  100% screw retained restoration, eliminating the risk of periimplantitis with stronger crestal bone levels
-  100% patient-individual emergence profile
-  Concave & pink anodized implant shoulder for soft tissue design

INCLUDED
WITH EVERY
matrix[®]
IMPLANT

10 INTEGRATED APPS FOR YOUR DIGITAL WORKFLOW



Designed specifically to streamline your digital workflow, these digital applications offer fast, precise, and profitable clinical workflows. With these complimentary add-on digital applications at your fingertips, you'll have access to the **matrix**[®] digital universe, without the need of any abutment and no extra costs.



SCAN & Smile

The Fastest & Simplest Implant Smile

P. 8



**TRI[®]
DIGITAL HEALING
COLLAR LIBRARY**

Individual healing for every patient

P. 9



**TRI[®]
SCAN BRIDGE**

The Ultimate Digital Scanning Experience

P. 10



TRX GUIDED SURGERY

Empower your precision with TRX Guided Surgery

P. 11



**TEETH
2GO**

Prepare the perfect smile before Surgery

P. 12



**TOOTH-
IN-A-BOX**

All-in-One implant + Zirconia restorations

P. 13



SCAN & Smile™ IN ONE HOUR



THE FASTEST & SIMPLEST IMPLANT SMILE

Power your patient visits with the Scan & Smile Solution by TRI®. The **matrix**® implant system in combination with 3D printing technology simplifies the immediate and chairside process. Scan & Smile allows you to place & scan the implant and print & insert the provisional crown in **less than 1 hour**.



WATCH THE VIDEO



TRI® DIGITAL HEALING COLLAR LIBRARY



WATCH THE VIDEO



INDIVIDUAL HEALING FOR EVERY PATIENT

TRI® is expanding its **matrix**® implant line portfolio with the first ever digital healing collar library. The digital healing collar library for the **matrix**® implant system allows to choose from 48 individual healing components based on the biological tooth shape.

Soft tissue management made easy by choosing a design in the CAD software and adding a personal touch based on the patient factors.



No CAD design needed



Individual tissue healing

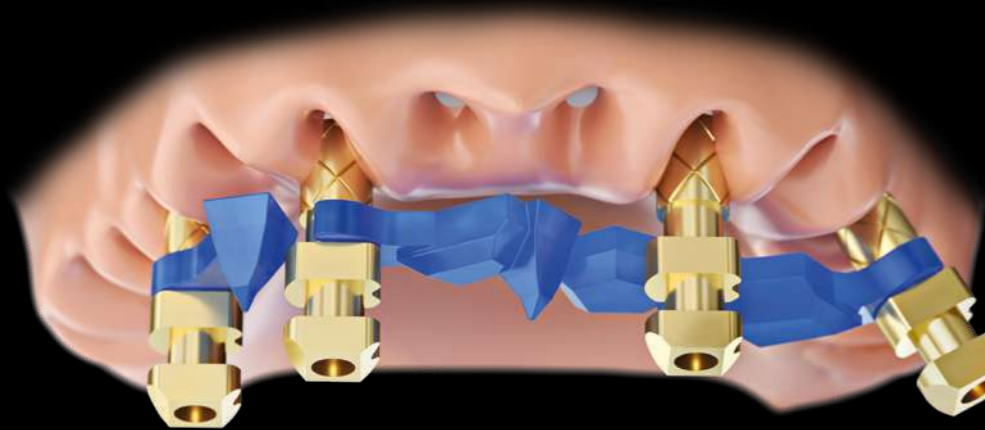


Cost efficiency no abutment needed



Print Chairside

TRI[®] SCAN BRIDGE

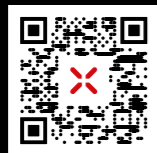


THE ULTIMATE DIGITAL SCANNING EXPERIENCE

The **matrix[®]** Scanbridge Technology provides a high-precision, cost-effective solution for full-arch scanning of the edentulous patient. Its simple design and easy click mechanism allows for easy handling and scanning of both implant position and soft tissue with one scan in only 20 seconds. The Scanbridge can be printed locally, saving cost and time.

It is compatible with all IOS scanners and available in different lengths and angulations, making it a versatile and seamless addition to any workflow.

WATCH THE TUTORIAL



- Highest precision for full-arch scanning
- Full-arch scan in 20 seconds
- Compatible with all IOS Scanners & no installation needed
- Print Chairside

TRX GUIDED SURGERY



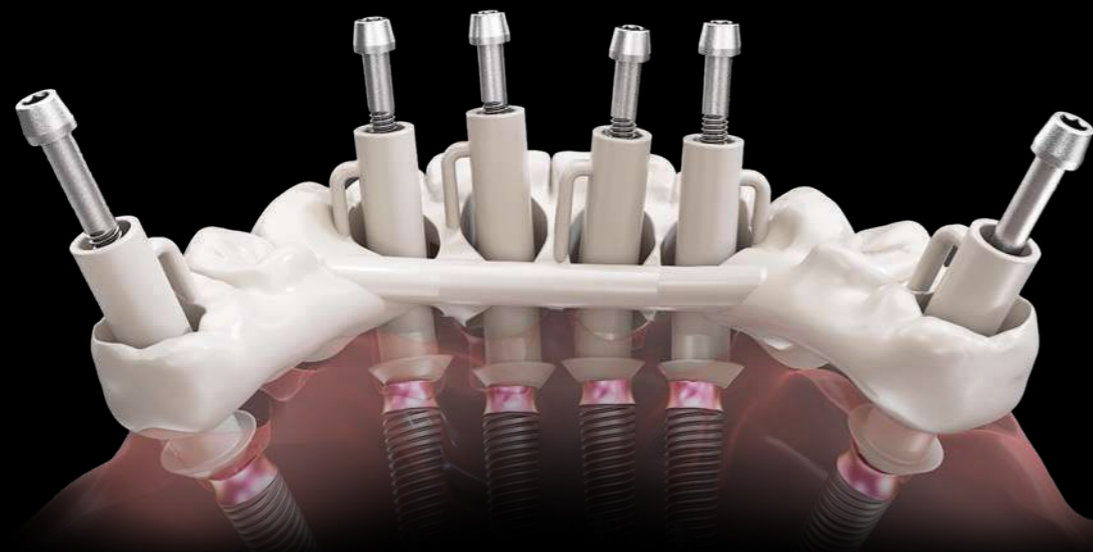
EMPOWER YOUR PRECISION WITH TRX

TRX Guided Surgery offers a radically reduced workflow with an unmatched precision due to the sharp cutting properties of the drills. Enjoy the highest level of precision, even in challenging cases, with TRX's lateral cutting abilities and patented 2-level depth stop.

With its simple and unique design, color-coding, and compatibility with major software providers, TRX is the ultimate solution for seamless and precise dental surgery.

- Highest precision
- Minimal portfolio of instruments
- Fast surgical procedure & handling for staff
- Compatible with all major software

TEETH 2GO



WATCH THE
TUTORIAL



PREPARE YOUR PATIENT'S PERFECT SMILE BEFORE SURGERY

The **Teeth2Go** makes the implant process easier and more efficient than ever. Whether it's for a single crown, bridge, or full arch, the innovative **Teeth2Go** App is designed to fit every indication seamlessly. With our patented FlexFit Technology, you can prepare and customize restorations chairside, ensuring a perfect smile is ready before the surgery.

The process is so streamlined that your patient will only need to spend 30 minutes in the chair, with minimal adjustments and maximum satisfaction. Deliver exceptional results effortlessly, making every patient experience a success with minimal time and effort.



Faster chairside
Procedure



Better
Esthetics



Higher
Stability



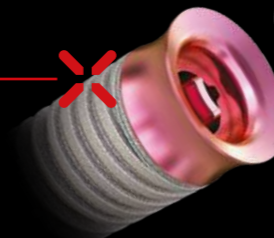
Time and cost
Saving

TOOTH- IN-A-BOX

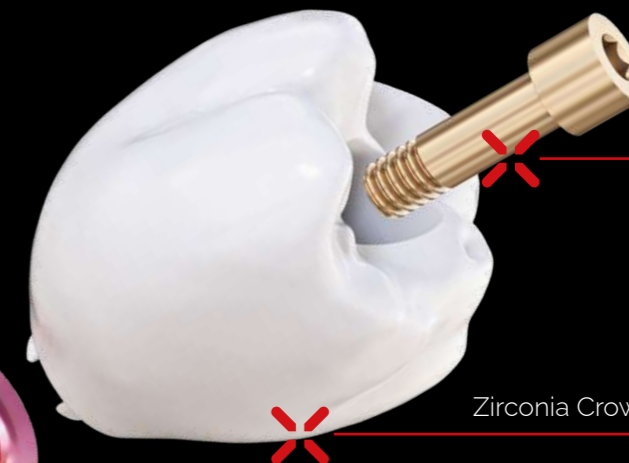


INCLUDED IN THE
ALL-IN-ONE PACKAGE:

matrix® Implants



Zirconia Crown / Bridge / Full Arch



Clinical Retaining
Screws

WATCH THE
VIDEO



ALL-IN-ONE IMPLANT + ZIRCONIA RESTORATIONS

Our exclusive, cost-effective Tooth-in-a-Box Package delivers a comprehensive, all-in-one solution for streamlined dental restorations. Featuring **matrix®** implants, fixation screws, and final monolithic zirconia restorations, it's designed to cover Single Crowns, Bridges, and Full Arches with precision. This bundled package offers competitive pricing to boost efficiency and expand your treatment capabilities, making high-quality restorations simpler and more accessible.

INDICATIONS:



Tooth-in-a-Box



Bridge-in-a-Box



Arch-in-a-Box

DISCOVER THE UNIQUE FEATURES OF THE **matrix**[®] IMPLANT SYSTEM

matrix[®] MillFit
designed to be milled locally
P. 17

matrix[®] SmartBolt
made to support all materials
P. 19

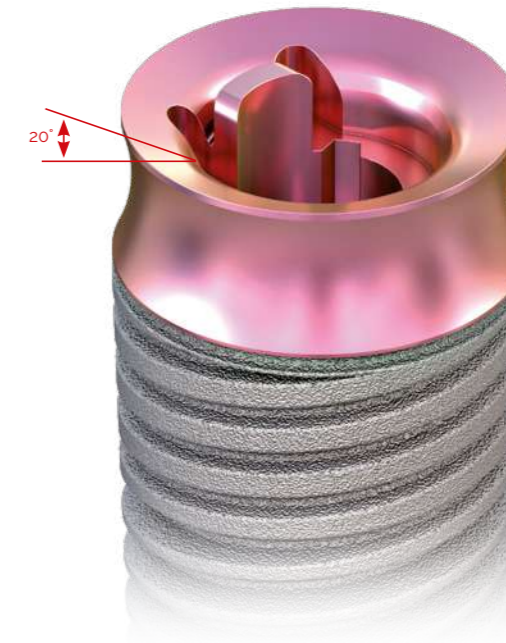
matrix[®] SlimNeck
for increased biological width
P. 18

matrix[®] ProFlex
allows implant
placement
and screw channel
freedom
P.20

matrix[®] SmartLock
for engaging and
non-engaging restorations
P. 16

matrix[®] PowerBase
designed for Zirconia on
Titanium
P. 15

matrix[®] PowerBase



A WORLD-CLASS CONNECTION DESIGNED TO SUPPORT **ZIRCONIA** ON **TITANIUM**

matrix[®] PowerBase and its 20° degree internal flat connection, maximizes the surface area to support prosthetic restoration directly on the implant. The world-class connection provides self-centering properties for ideal handling and fit and allows high divergences (50°) between implants.

+ Platforms P37 and P45 with significantly larger area than a Ti-Base

+ Optimal for force transmission between implant and crown

+ Support direct restoration with all materials

WATCH
ANIMATION



Multi-Level
P37 (ø3.7mm)



Multi-Level
P45 (ø4.5mm)

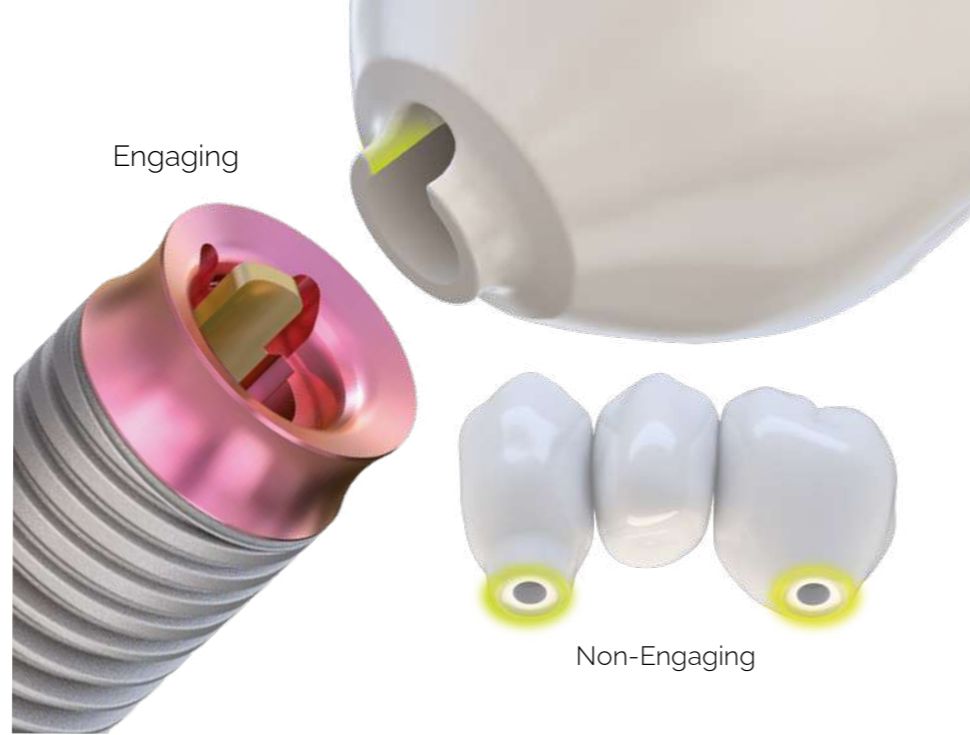


Bone-Level
P37 (ø3.7mm)



Bone-Level
P45 (ø4.5mm)

matrix[®] SmartLock



A VERSATILE CONNECTION FOR **ENGAGING** AND **NON-ENGAGING** RESTORATIONS

matrix[®] SmartLock is a self-locking system for automatic positioning, which allows only one single position for crowns and a non-engaging position for multi-unit restorations. It consists of two big vertical rotation blockers with 1.2mm distance for easy milling of the prosthetics and tactile feedback.

- + Highly precise fit through vertical guidance
- + Self-locking system for automatic positioning (one position)
- + Allows for engaging as well as non-engaging connections based on milling strategy.

WATCH ANIMATION



matrix[®] MillFit

Dedicated milling strategy for matrix[®] connection.

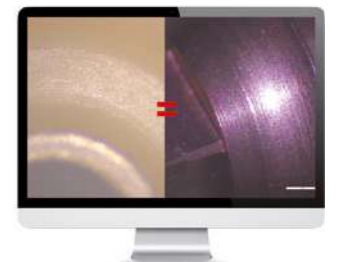
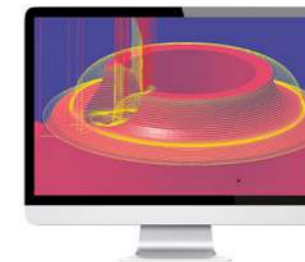


CONNECTION DESIGNED FOR EASY AND HIGHLY **PRECISE LOCAL MILLING**

matrix[®] MillingFit achieves easy and precise milling with standard tools through dedicated milling strategies. A compact connection between implant, screw and crown with no hollow spaces and an interface surface roughness which rises above industrial abutment manufacturing.

- + Standard drills and dedicated CAM strategies for matrix[®]
- + Achieves 0.2μ of surface roughness for all materials
- + Better than industrial abutment manufacturing (Ra 0.6 μ)

WATCH ANIMATION



matrix[®] SlimNeck



PROFILES FOR INCREASED BIOLOGICAL WIDTH

Concave Multi-Level emergence profile for infinitely more esthetics

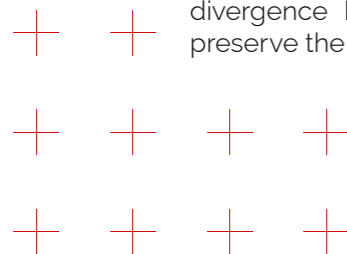
The **matrix[®]** multi-level implant comes with a modern emergence profile and a unique concave design. The implant line features a pink anodized neck for optimized translucency and supports modern surgical procedures, such as sub-crestal placements. Ideal for minimal invasive procedures and an increased biological width, **matrix[®]** is better than ever in guaranteeing high esthetic results and longevity.

Bone-Level platform switching

The **matrix[®]** bone-level implant features a 20° shoulder for high divergence bridge restorations and integrates platform-switching to preserve the crestal bone.



WATCH ANIMATION



matrix[®] SmartBolt



INTELLIGENT SCREW SYSTEM FOR ALL MATERIALS AND INDICATIONS

matrix[®] SmartBolt consists of three different screw heads, designed for material-specific milling strategies to ensure a precise fit. The specially treated screw surface guarantees increased hardness, scratch-resistance and fatigue strength. The sterile screws are gold anodized for higher esthetics with translucency zirconia.

- + Standard drills and dedicated CAM strategies for **matrix[®]**
- + Achieves 0.2µ of surface roughness for all materials
- + Better than industrial abutment manufacturing (Ra 0.6 µ)

WATCH ANIMATION

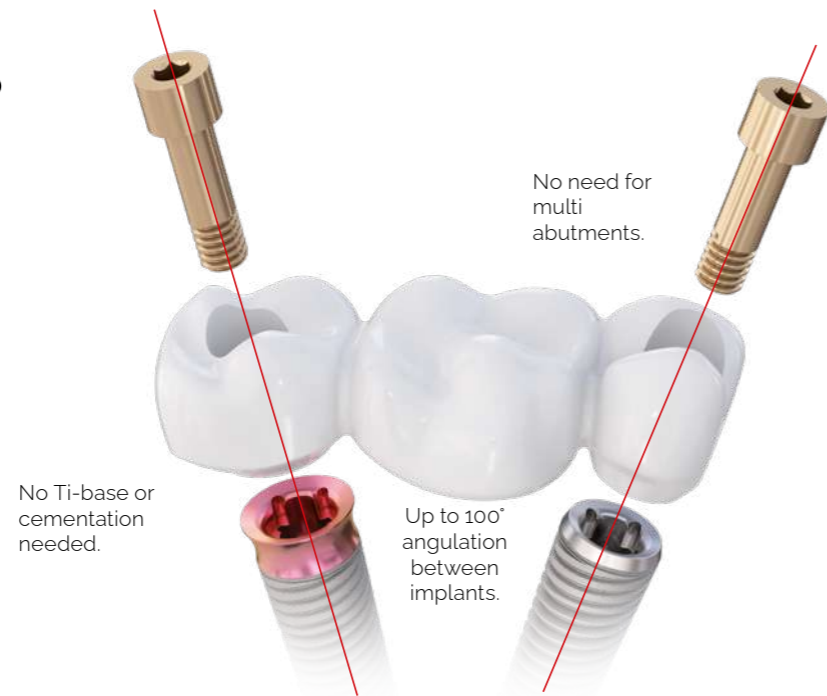


Metals
Narrow screw-head for metal restorations to minimize diameter of screw-access hole



Ceramics
Medium-size screw-head optimized to support zirconium.

matrix[®] ProFlex



HIGHEST DESIGN FLEXIBILITY IN LOCAL PRODUCTION

matrix[®] ProFlex allows implant divergence up to 100° and 30° angled screw channels. The compact design facilitates the placement of fully anatomical crowns without adjustment and supports easy impression taking for angulated implants.

- + Screw channel up to 30° degree angulation all around
- + Occlusal esthetics in anterior region
- + Better handling in posterior region



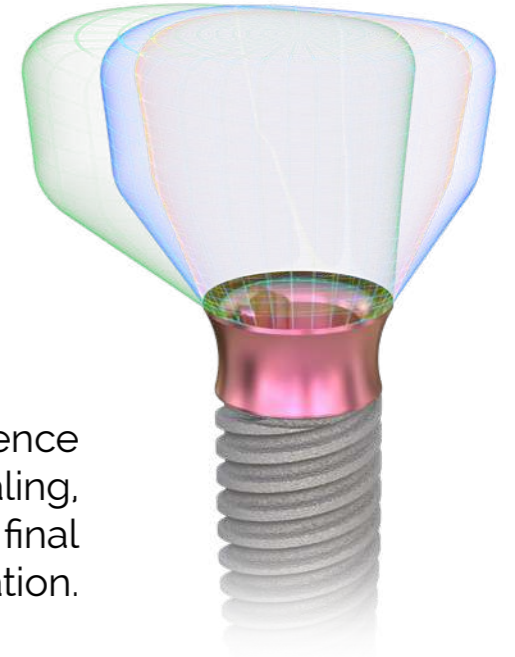
Allows implant divergence up to 100° and 30° angled screw channels.

WATCH
ANIMATION



PATIENT- SPECIFIC & INDIVIDUAL EMERGENCE PROFILE

Same emergence profile for healing, provisional and final restoration.

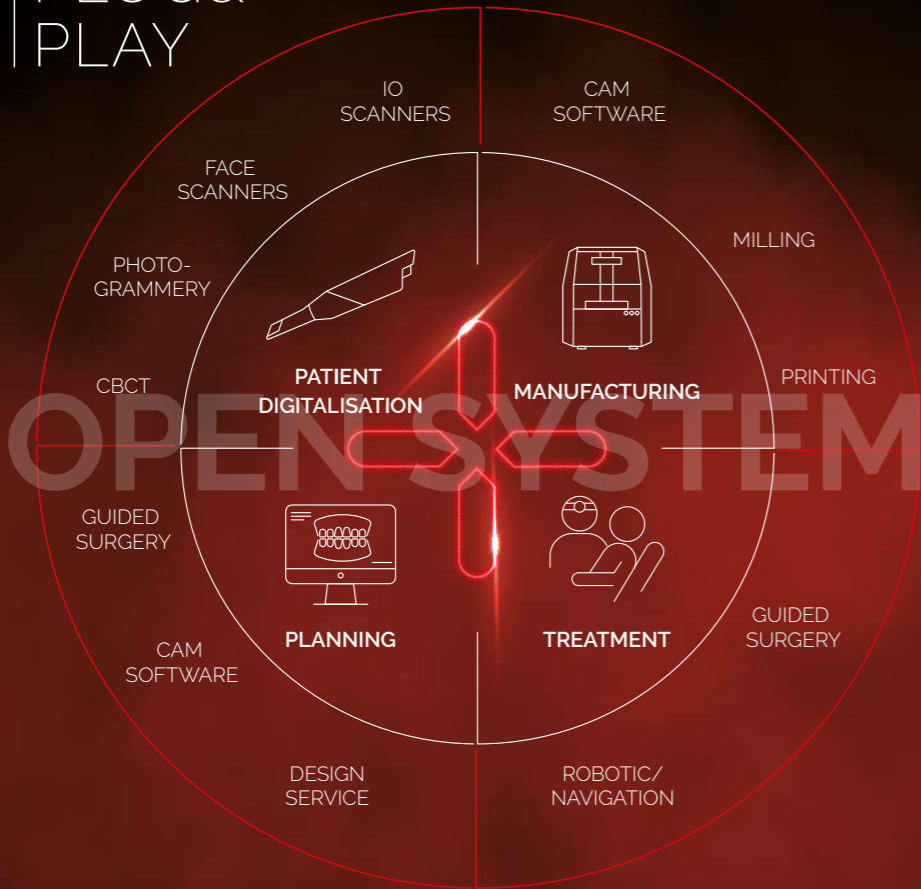


matrix[®] allows to create 100% digital, chairside manufactured patient-specific emergence profiles by considering the biological shape and transferring the design 1:1 throughout the whole treatment process (healing, provisional and final restoration). With **matrix[®]** any design and shape on any material is possible and guarantees a full-anatomic and high esthetic gingiva management.

- + Production of personalized healing collar from any material
- + Immediate and efficient through chairside manufacturing option
- + High esthetic gingiva management



Dr. Ramón Gómez Meda (Spain)



TRI®+ DIGITAL SOLUTIONS: THE POWER OF PLUG & PLAY

TRI®+ Digital Solutions offers a revolutionary open interface to leading technology partners in digital dentistry, ensuring full compatibility with a wide range of systems. Unlike closed, proprietary digital workflows, TRI®+ embraces transparency and flexibility, allowing you to integrate seamlessly with your preferred tools and technologies. This Plug & Play approach eliminates barriers, giving you the freedom to provide tailored treatments with ease. TRI®+ ensures that your practice remains at the forefront of innovation.

INCLUDING CASES BY:



Prof. Ronald Jung

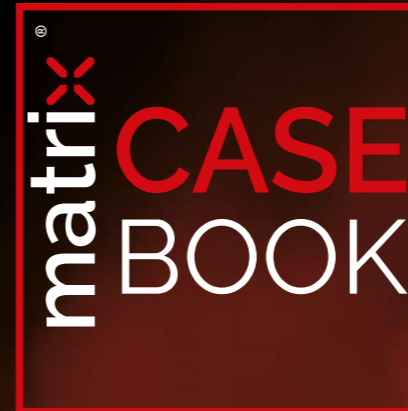


Dr. Ramón Gómez Meda



Dr. Ryan Dunlop

AND MANY MORE



THE **matrix** CASE BOOK

DOWNLOAD



DOWNLOAD THE **matrix** SCIENTIFIC SUMMARY WITH ALL PRE-CLINICAL AND CLINICAL EVIDENCE





TRI

TRI Dental Implants Int. AG

Switzerland

Infoline Europe: 00800 3313 3313

Infoline USA: (949) 676-7383

www.tri.swiss



TRI® Dental Implants, the TRI® Dental Implants logotype and all other trademarks used in this document are, if nothing else is stated or is evident from the context in a certain case, trademarks of the TRI Dental Implants Int. AG.

2025-03-TRI®-matrix®-Overview-EU-01

CE 0297 | FDA Registered

