



---

#1 DIGITAL IMPLANT COMPANY



# PHILOSOPHY

TRI® Dental Implants is an innovative provider of digital implant solutions from Switzerland. Join our unique approach in implant dentistry!



Founder & Chairman  
Tobias S. Richter



## SWISS QUALITY

High-Quality Products from more than 25 years of World Class Production



## PERFORMANCE

4 Gold Standards for maximum performance in your daily clinic



## SIMPLICITY

A unique handling experience driven by an intelligent portfolio with 50% less components



## THINK DIGITAL

TRI+ Digital Solutions for simple, fast and cost-efficient digital workflows



## FAIR PRICE

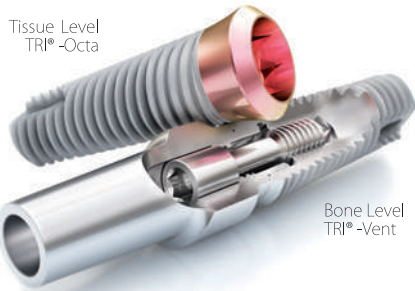
Up to 50% less in price due to a lean and smart business model



# SUCCESS FACTORS OF THE TRI® DENTAL IMPLANT SYSTEM.

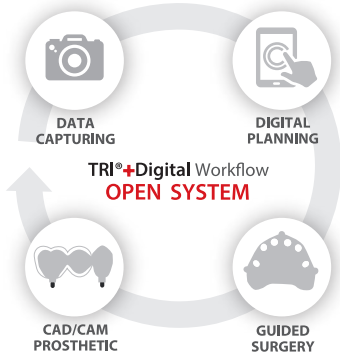
## TRI® PERFORMANCE CONCEPT (Pag. 5-11)

The TRI® Performance Concept integrates 4 Gold Standards, in order to make the life of the practitioner as simple and yet high performing as possible to achieve natural esthetic results in daily practice.



## PACKAGING (Pag. 11)

The revolutionary touchless delivery concept TRI® Pod allows to pick-up the implant directly with the surgical hand-piece in one single step. Whilst guaranteeing the highest purity of the TRI® SBA surface. A true design innovation which will take your surgical performance to a new level.



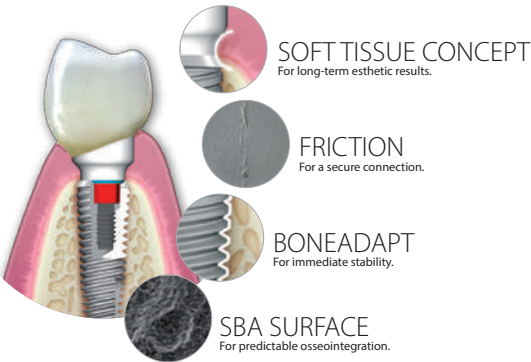
## IMPLANT LINES (Pag. 14)

The TRI® Performance Concept is incorporated in the Bone Level (TRI®-Narrow, TRI®-Vent) and Tissue Level (TRI®-Octa) implant lines and ensures optimal esthetic results both in the anterior and posterior area.



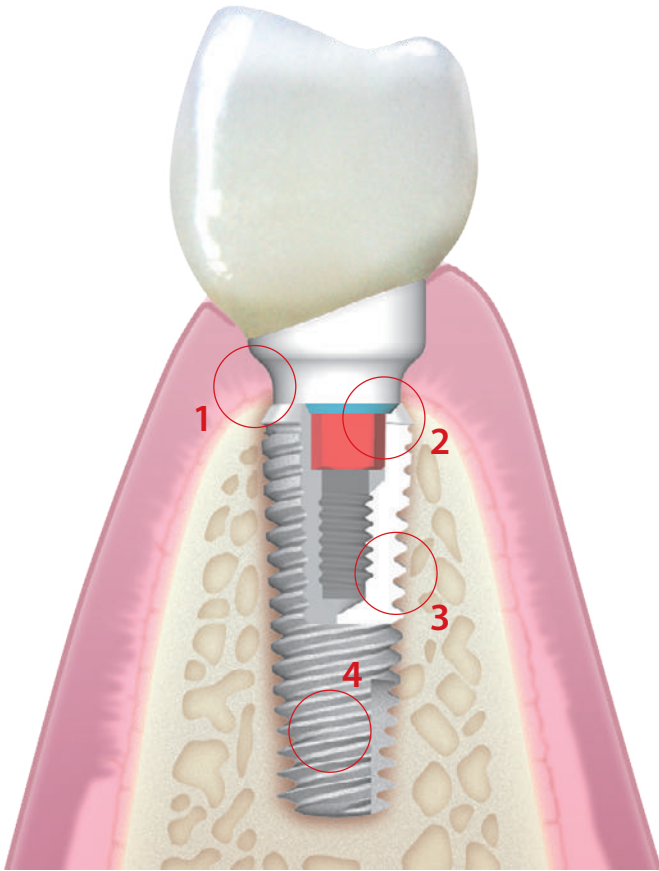
## TRI® DIGITAL (Pag. 12-13)

TRI®+ Digital Solutions guarantees a universal implant open interface to leading technology partners in digital dentistry. TRI®+ Digital Solutions allows a wide range of indications via 3D Planning, Guided Surgery, CAD Abutments, CAD/CAM screw-retained and cement-retained restorations or modern treatments such as All-on-TRI® procedures

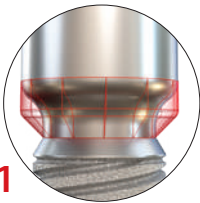


# TRI® PERFORMANCE CONCEPT 4 GOLD STANDARDS IN ONE CONCEPT.

The TRI® Dental Implant System integrates four essential technology features. Each feature aims to provide maximum performance and lasting quality for the treatment of the dentist. We combine these elements in the TRI® Performance Concept.

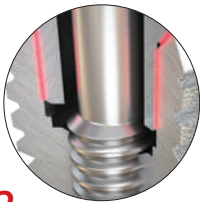


## SOFT TISSUE CONCEPT (Pag. 6-7)



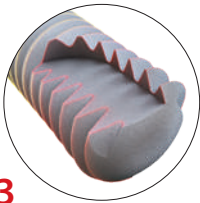
- Integrative platform-switch concept to preserve the crestal bone
- Consistent soft tissue management within all prosthetic components
- Homogeneous transition between implant and abutment to avoid «dirt pockets»

## FRICTION (Pag. 8)



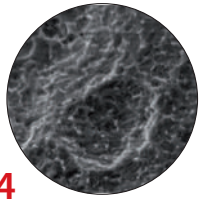
- Secure abutment stability through a dense tapered press fit
- Elimination of micro-movements between implant and abutment
- Internal hex for guided abutment positioning

## BONEADAPT (Pag. 9)



- High primary stability through a tapered implant body with self-cutting thread
- Bio-mechanical bone-adaption with maximum bone-to-implant contact
- Optimized conservation of the cortical bone through macro-thread design

## SBA\* SURFACE (Pag. 10-11)

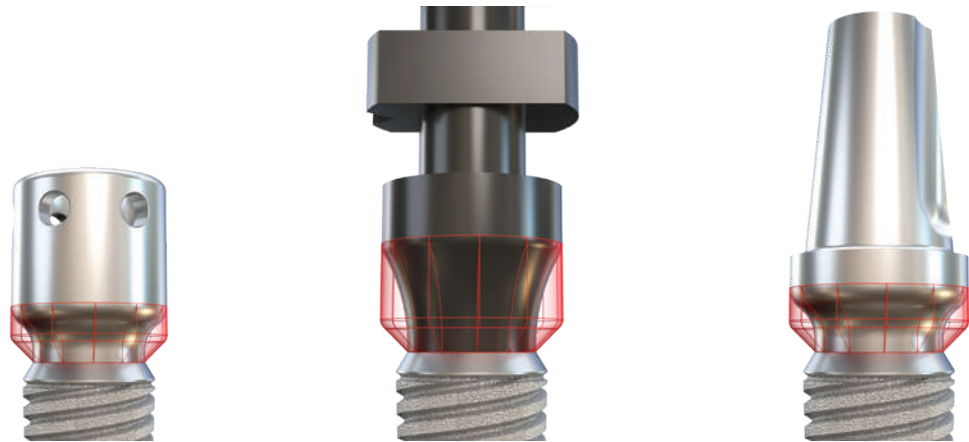


- Fast and reliable osseointegration
- Industry gold standard for secure osseointegration for more than 20 years
- World's most scientifically proven surface technology.

\*SBA: Sand-Blasted, large-grit, double Acid-etched

# TRI® SOFT TISSUE CONCEPT

## FOR LONG-TERM ESTHETIC RESULTS.



HEALING  
COLLAR

IMPRESSION TRANSFER  
& SCANBODY

ABUTMENT

The soft-tissue interface of the TRI® Dental Implant System is unique and innovative at the same time. The continuous platform switch allows for a consistent and tight soft tissue seal around the implant abutment connection. All prosthetic components integrate a consistent emergence profile – covering all components, from impression post and healing cap to the final abutment.



### CONSISTENT EMERGENCE PROFILE.

The soft tissue interface is smooth and leaves no “dirt pockets” despite its broad platform switching concept. As a result, the soft tissue protects and seals the critical implant-abutment interface.

# TRI® PROSTHETIC LINE

## ONE CONNECTION FITS ALL.

### MAXIMUM PROSTHETIC FLEXIBILITY WITH ONLY ONE CONNECTION

With only one prosthetic connection per implant line TRI® reduces the number of components to a minimum, optimizing the handling and storage requirements in the daily practice. Choose your optimal abutment with the TRI® Soft Tissue Concept, to achieve high-end esthetic results.



### HIGHLIGHTS PRODUCTS



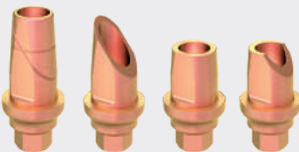
IMPRESSION POSTS

TRI® offers revolutionary, patented instrument-free innovations for closed-tray and open-tray impression taking: digital or analog.



ALL-ON-TRI® ABUTMENT

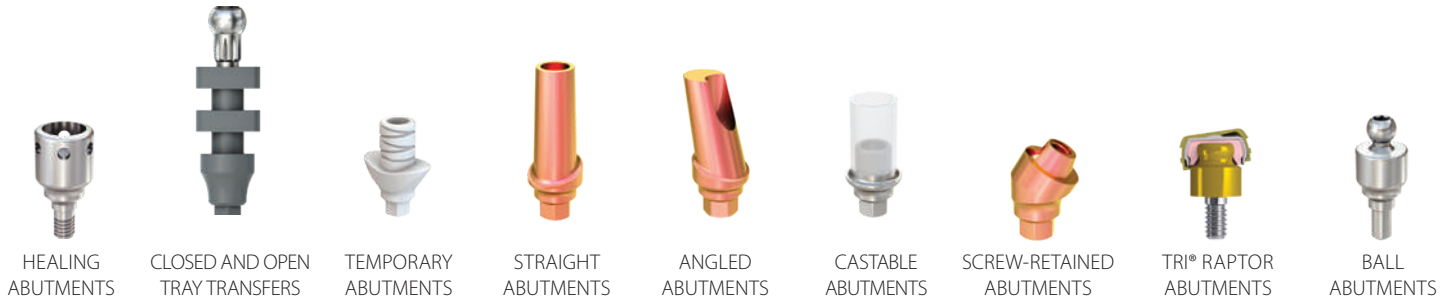
The „All-on-Tri“ Abutment allows for efficient and predictable treatment of fully edentulous patients with limited available bone.



TRI®-BASE

The newly patented TRI®-Base is the first Ti-Base that can be customized in length and angulation, both physically by the technician and digitally in the respective CAD Software.

### PRODUCT RANGE



# TRI® FRICTION

## FOR A SECURE CONNECTION.

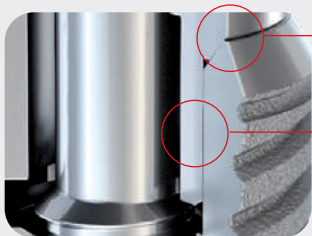


PROBABLY THE STRONGEST CONNECTION IN THE WORLD.

TRI® FRICTION is a technologically unique prosthetic connection and an integral element of the TRI® Performance Concept. A production tolerance of 0.006 mm guarantees the perfect and highly precise fit of the prosthetic components with long-term stability.

### ADVANTAGES OF TRI® FRICTION:

- Press fit for maximal abutment stability
- Avoid micro movements between implant and abutment
- No screw loosening through rotational stability
- Improved handling through retention of the abutment even without screw



Internal conical 45 degree connection to eliminate the micro-gap.

Frictional internal hexagon connection for maximum rotational and axial stability.

# TRI® BONEADAPT

## FOR IMMEDIATE STABILITY.



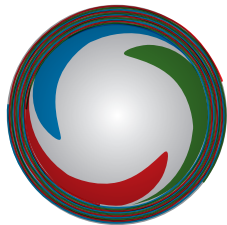
PLATFORM SWITCH NECK DESIGN  
to shift the biological width horizontally and stabilize the crestal bone

CRESTAL THREAD DESIGN  
with square thread pattern to protect the cortical bone

BODY THREAD DESIGN (60 degrees)  
to enhance bone surface area in the spongiosa for optimal bone-to-implant contact

APICAL THREAD DESIGN (45 degrees)  
with increased sharpness for immediate primary stability

ROUND APEX  
to protect the Schneiderian Membrane



### TRIPLE-LEAD THREADS

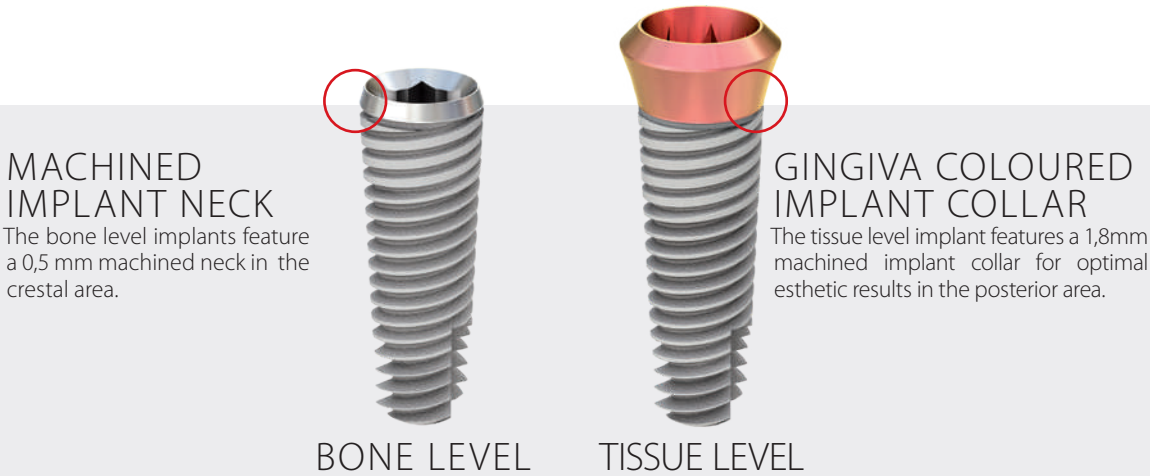
Three independent threads start 120° apart and spiral around the implant body and end on the crestal vertical groove. Triple threads provide a lead of 1.8 mm per rotation as an average.



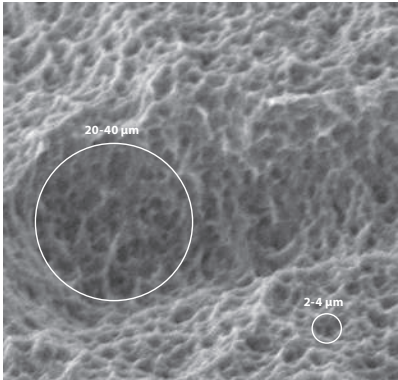


# TRI® SBA SURFACE

## FOR PREDICTABLE OSSEOINTEGRATION.

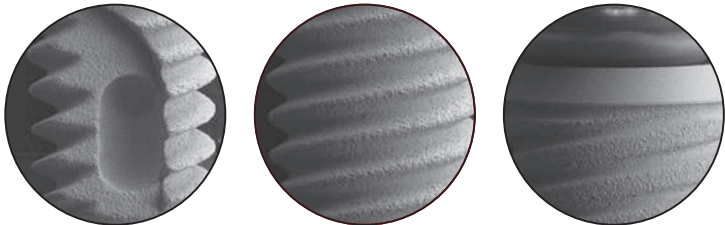


The TRI® SBA (sandblasted, large grit, acid-etched) surface is one of the industry gold standards for more than 20 years. It is created by blasting the implant surface under pressure with corundum particles. In the final step the surface is acid-etched twice in order to attain a medium roughness.



### SURFACE STRUCTURE

A macrostructure of 20-40 µm and a micro structure of 2-4 µm as an ideal basis for excellent osseointegration. This structure has been proven by numerous clinical studies for this surface type.



# TRI® POD

## HANDLING. REINVENTED.



### TO TOUCH IT IS TO LOVE IT.

The new implant packaging by TRI® integrates the latest engineering know-how and innovation – Made in Switzerland. Its revolutionary touchless delivery concept allows to pick-up the implant directly with the surgical hand-piece in one single step. Whilst guaranteeing the highest purity of the TRI® SBA surface. A true design innovation which will take your surgical performance to a new level. **Touch it, and you will love it!**

### 3 Options for Implant Insertion

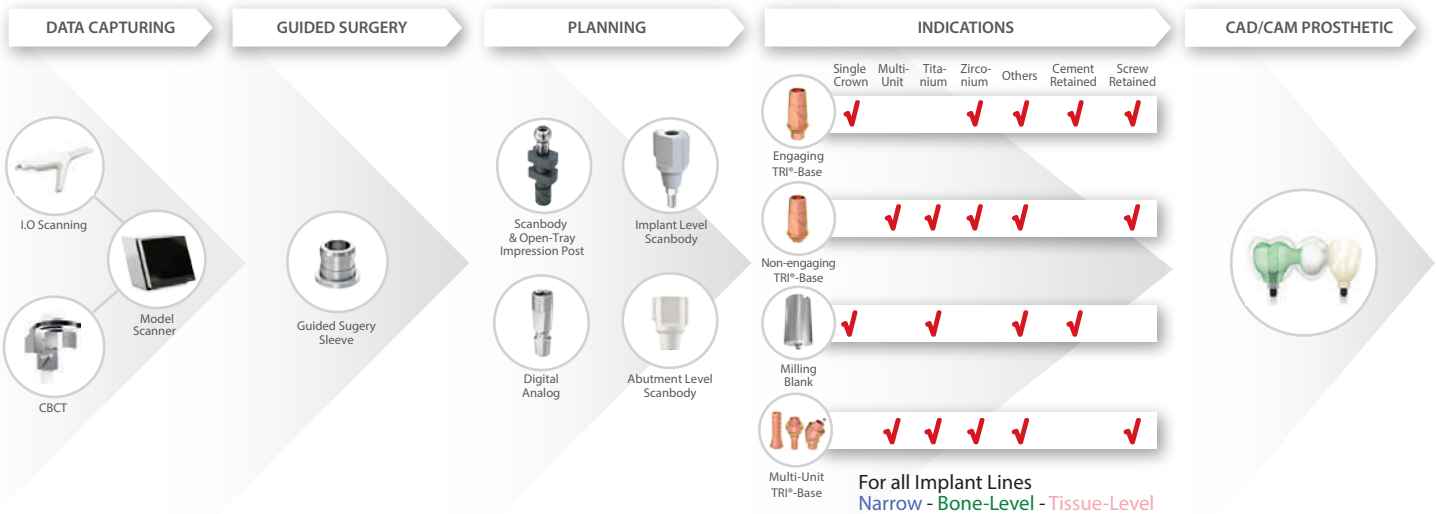
- Ratchet**
- Handpiece**
- By hand**

# TRI<sup>®</sup>+ DIGITAL

## DIGITAL WORKFLOW.

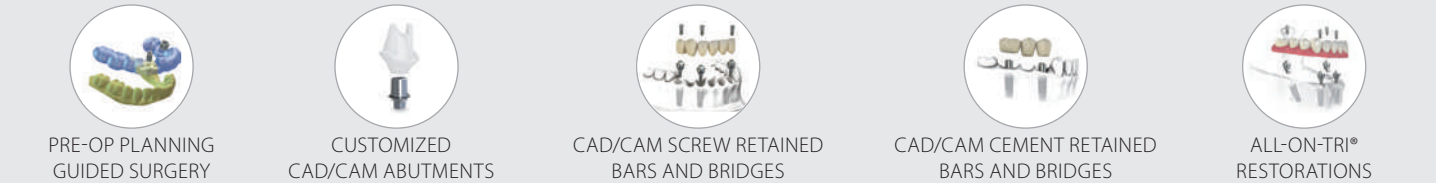
TRI Dental Implants sets new standards with **TRI+ Digital** as a universal implant interface to leading technology partners in digital dentistry. Linked with a lean dental implant system, **TRI+ Digital** offers treatment options from simple to complex without limits:

- + 3D-Planning & Guided Surgery
- + Customized CAD abutments
- + CAD/CAM Cement-retained crowns and bridges
- + CAD/CAM Screw-retained bars and bridges



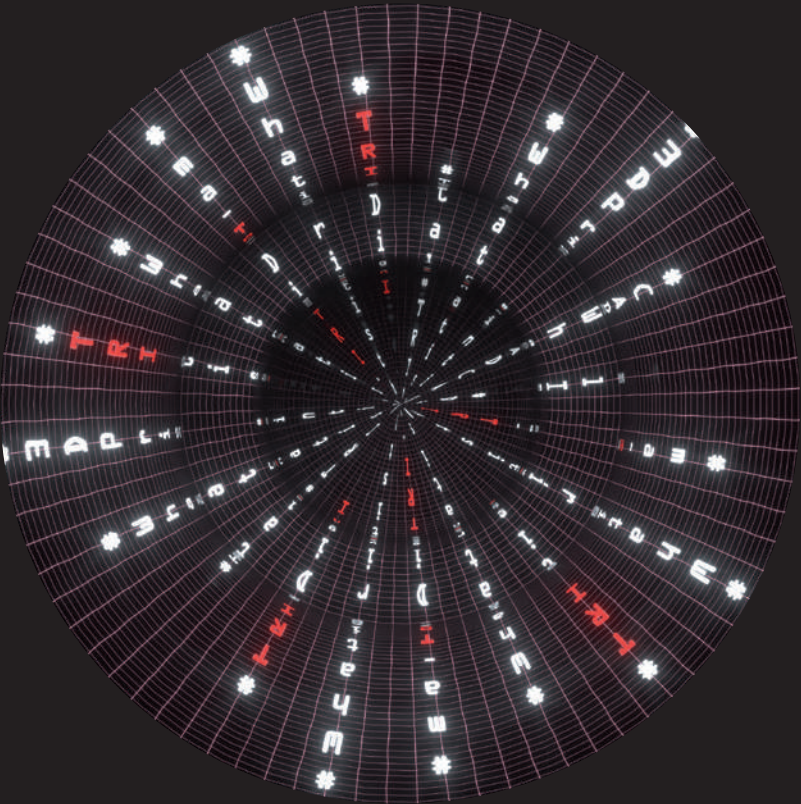
\* Only for Bone-Level Implants available

### DIGITAL TREATMENT OPTIONS



# matrix<sup>®</sup>

## THE WORLD'S FIRST DIGITAL IMPLANT.



## ELIMINATION OF THE ABUTMENT

The **matrix<sup>®</sup>** is the first-ever dental implant connection that has been specifically designed for the new digital manufacturing technologies such as CAD/CAM milling or 3D printing. This unique implant concept allows to plan the restoration directly on the implant without the use of the abutment. Covering an unlimited design flexibility, restorations from screw-retained full-anatomic CAD/CAM crowns to multi-unit bars and bridges can be planned and placed directly on the implant. No limitation in angulation and indication, no need of cementation as well as the unique option to plan the soft tissue management digitally, will guarantee longevity and high esthetic results.

Join the **matrix<sup>®</sup>** today and be the first to know more: [tri.swiss/digital](https://tri.swiss/digital)



# TRI® IMPLANT PORTFOLIO

## ONE KIT FOR ALL IMPLANT LINES.

The TRI® Dental Implant System consists of 3 implant lines.  
All implant lines can be placed with one lean surgical kit.  
Simply perfect!



TRI®-Narrow

Ideal with limited horizontal bone.

Ø 3.2 mm

3.3 mm

TRI®-Vent

The Bone-Level Implant for all indications.

Ø 3.5 mm

3.75 mm

4.1 mm

4.7 mm

TRI®-Octa

The Tissue-Level Implant for esthetic results in the posterior region.

Ø 4.8 mm

3.75 mm

4.1 mm

4.7 mm

### DIAMETERS & LENGTHS

	Ø 3.3 mm	Ø 3.75 mm	Ø 4.1 mm	Ø 4.7 mm
L 6.5 mm				
L 8 mm				
L 10 mm				
L 11.5 mm	(L 11 mm)			
L 13 mm				
L 16 mm				

# TRI® SOLUTIONS

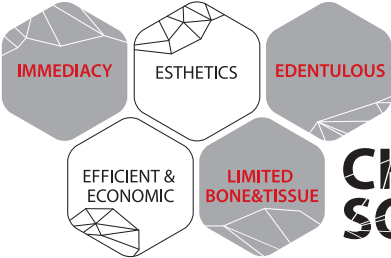
## IMMEDIACY.



IMMEDIATE STABILITY.  
STRONG AS A ROCK.

With the innovative TRI® BoneAdapt Technology, TRI® provides a smart and aggressive implant design that outperforms existing industry standards in terms of Primary Stability\*. The benefit for clinicians and patients is a state-of-the-art treatment option at the day of surgery such as ALL-ON-TRI®, resulting in immediate satisfaction for a higher quality of life. Learn more about our TRI® Solutions on [tri.swiss/solutions](https://tri.swiss/solutions).

\*Based on in vitro bench testing in collaboration with University Center for Dental Medicine, Basel.



CHOOSE YOUR  
SOLUTION





**TRI Dental Implants Int. AG**  
 Switzerland  
 Infoline: 00800 3313 3313  
[www.tri.swiss](http://www.tri.swiss)

**Become a TRI® Follower**



**TRI® Dental Implants**, the **TRI® Dental Implants** logotype and all other trademarks used in this document are, if nothing else is stated or is evident from the context in a certain case, trademarks of the **TRI® Dental Implants Int. AG**. | 2019-12 | TRI® System Overview EN 2019-12/01



CE 0297

